

## LOCATION MAP



Note : This Brochure is for reference purpose only. It does not constitute part of an offer or contract. All plans, facilities etc., are subject to the approval of the respective authorities and would be changed. This discrimination remains solely with the developer. The photographs & artist impressions are for reference only.

www.charmsgroup.in

Welcome To Sacred Titwala



**CHARMS**  
**PARK**  
Titwala East



"MAKES EVERY  
MORNING  
A HAPPY  
MORNING..."





## ABOUT US

Equipped with years of experience in the construction business, CHARMS GROUP, an efficient and admired group of professionals went full steam ahead in residential properties around Thane and Kalyan. CHARMS HERITAGE soon become a landmark of construction in Kalyan and CHARMS STAR an exclusive commercial hub has been mentioned on various platforms for authenticity of purpose.

The versatility of the group can be found in their ongoing projects namely CHARMS CITY, CHARMS PARADISE, CHARMS HEIGHTS, CHARMS PARK at TITWALA. The group has planned 22 towers in the first phase followed by the construction of 50 towers in the second phase with total 4000 plus flats. We are starting our township projects at Vashind, Shahapur & Ambernath, which boasts of the best location and tranquility advantages.

Read on and discover a home that has but very few equals...



  
**CHARMS GROUP**  
your world.. our commitment...





CHARMS CORNER  
(Kalyan East)



CHARMS HEIGHTS  
(Titwala East)



CHARMS CITY  
(Titwala West)



CHARMS STAR  
(Kalyan West)



CHARMS PARADISE  
(Titwala East)

ONGOING  
PROJECTS



## BIRD'S EYE VIEW

Relax in serene ambiance of Charms Park. Its luxuriously build spaces will sink you with nature and create a perfect accordance in life and there are amenities to make you every effort simple and full of ease. It's a place where we have dedicated every bit to beautiful creations. This presents you with luxuriously designed spaces for living. Ensure you will beautify your life with the moments of happiness and joy.

 CHARMS  
**PARK**  
Titwala East





## INTERNAL AMENITIES

### STRUCTURE

- Well designed RCC structure.
- Earthquake resistant design with attractive elevation.
- Good quality brick work.
- External good quality sand-faced plaster.



### FLOORING

- Vitrified 2 x 2 tiles flooring in entire flats.
- Anti-skid Ceramic tiles for bath / toilet flooring
- Dado up to door height



### KITCHEN

- Granite kitchen platform with S.S. Sink & designer tiles.
- Dado up to window height level 'N' granite service platform.

### DOORS & WINDOWS

- Main door RM frame with designed moulded door.
- All internal RM wood frames with designed shutter.
- Bath / Toilet granite frame with FRP water proof doors.
- Powder coated aluminium sliding window.

### PLUMBING

- Concealed plumbing work. C P fittings with Jaguar or equivalent.
- Good quality sanitary fittings.

### ELECTRICAL

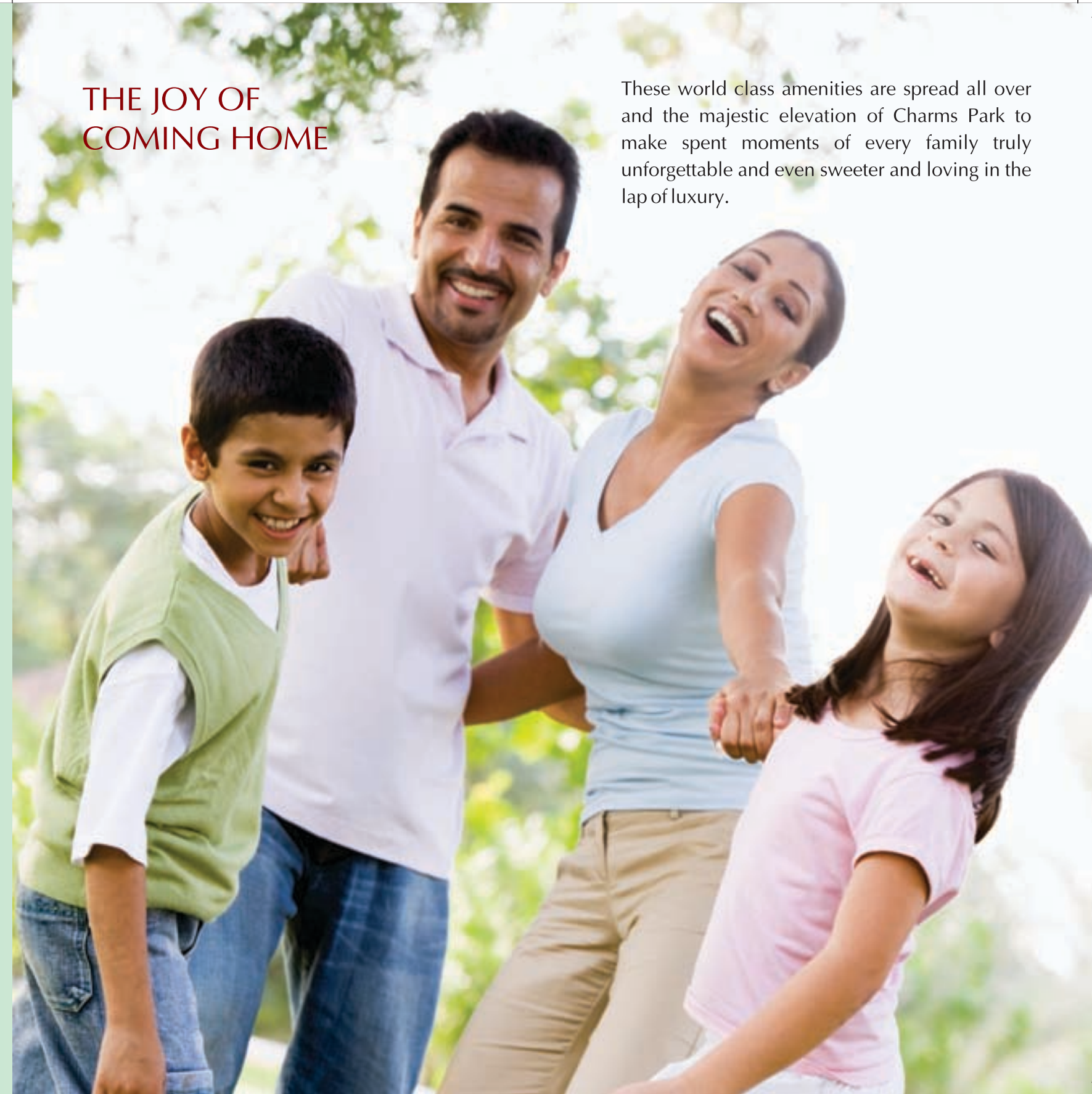
- Concealed copper wiring with ISI mark.
- Inverter provision for electricity back-up.
- Switches ISI mark with MCB/ ELCB.

### PAINTING

- POP finish with plastic paint.
- Acrylic for external walls.

## THE JOY OF COMING HOME

These world class amenities are spread all over and the majestic elevation of Charms Park to make spent moments of every family truly unforgettable and even sweeter and loving in the lap of luxury.



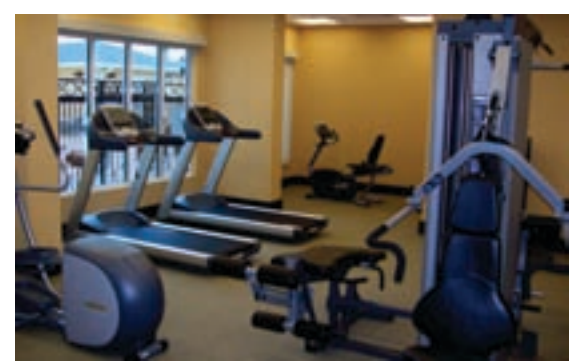


## EXTERNAL AMENITIES

AMPLE CAR  
PARKING SPACE



BEAUTIFUL DESIGNED  
ENTRANCE LOBBY

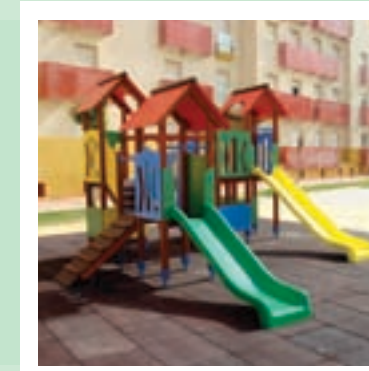


GYMNASIUM



PROPOSED CLUB HOUSE

GENERATOR BACKUP FOR  
COMMON LIGHTING.

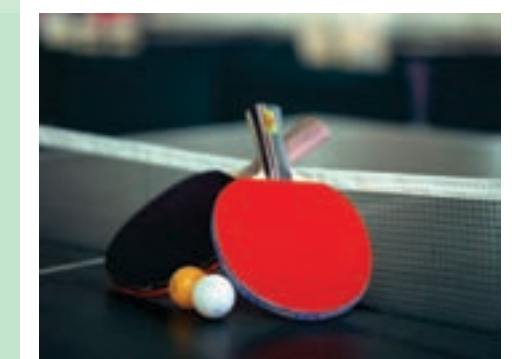


CHILDREN  
PLAY AREA

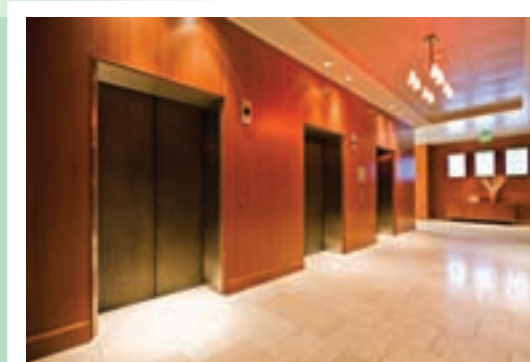


BEAUTIFUL LANDSCAPED GARDEN

INDOOR GAMES.



INTERCOM FACILITY



HIGH-TECH ELEVATORS  
WITH GENERATOR BACK-UP



TYPICAL FLOOR PLAN (WING-C)  
(2ND, 4TH, 6TH FLOOR)

FLOOR PLAN

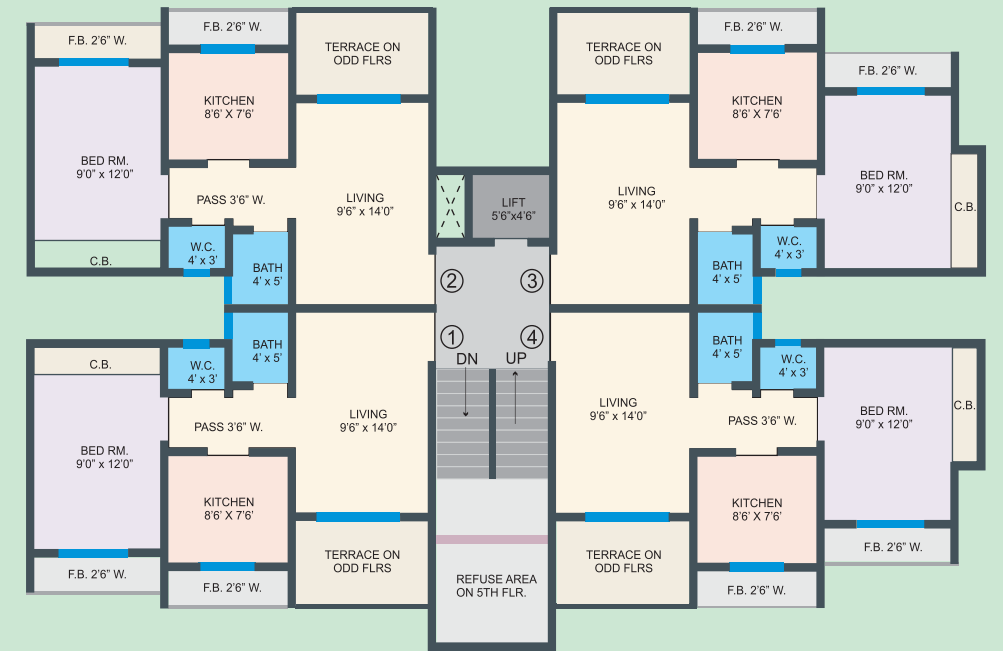


TYPICAL FLOOR PLAN ( WING-D)  
(2ND, 4TH, 6TH FLOOR)

FLOOR PLAN



TYPICAL FLOOR PLAN (WING-C)  
(1ST, 3RD, 5TH, 7TH FLOOR)



TYPICAL FLOOR PLAN ( WING-D)  
(1ST, 3RD, 5TH, 7TH FLOOR)

