



Dr. John Mathew

A man with a vision. A man on a mission.

A marvelous creation that complements one of the best styles of Nalukettu architecture by Suresh Babu & Designers and the vision of Dr. John Mathew (ROY), the Managing Director and Founder of this project, brought to you by Charms Group and Elixir Realty. Having spent most of his life at his family home in Kerala, John has a strong affection for traditional architecture. The charitable trusts he had established and all the other contributions that he had made towards the development of Thane District, rightfully resulted in Lokmat Media awarding him 'Lokmat Icon of Thane' for the year 2013.

Elixir Realty has a well balanced team of professionals, striving hard to bring about Kerala Village and many other such projects in the nation. A team with an experience of 20 years and more in the field of real estate development and having completed many residential and commercial projects in and around Mumbai, Elixir Realty is constantly thriving towards the betterment of the society and the nation.





Kerala
VILLAGE



Why Kerala Village is non pareil

In the midst of a vast embodiment of green, pollution free lands in the town of Shahapur, just 55 km or an hour drive from Thane, lies the township of Kerala Village. A project of 48 villas, designed for premium and exclusive living for the residents, not only holds modern features but is also home to scenic landscaping. The project is designed by the globally renowned architect, Suresh Babu whereas the landscape has been designed by Arun Kumar Suvarna, one of the biggest names in landscape designing.

Imagine waking up to the sight of the sun rays shining in your hallway through the roof, the birds welcoming you with their chirps and the fragrance of the freshly ripened fruits engulfing your senses. Such are the moments that create a lifetime of memories. Relive your childhood along with your children and grand children by teaching them how to climb trees, how to fish or by discovering various species of insects and birds in the vast vegetation that is a part of Kerala Village.





God's own country comes to Shahapur

The beauty of Kerala's landscapes surrounded by pristine waters is what has rightfully justified the calling 'God's Own Country'. We have been blessed with a stream as vast as a lake, surrounding Kerala village and providing as a natural centre for recreation such as fishing; which will make your experience of Kerala's culture more memorable.



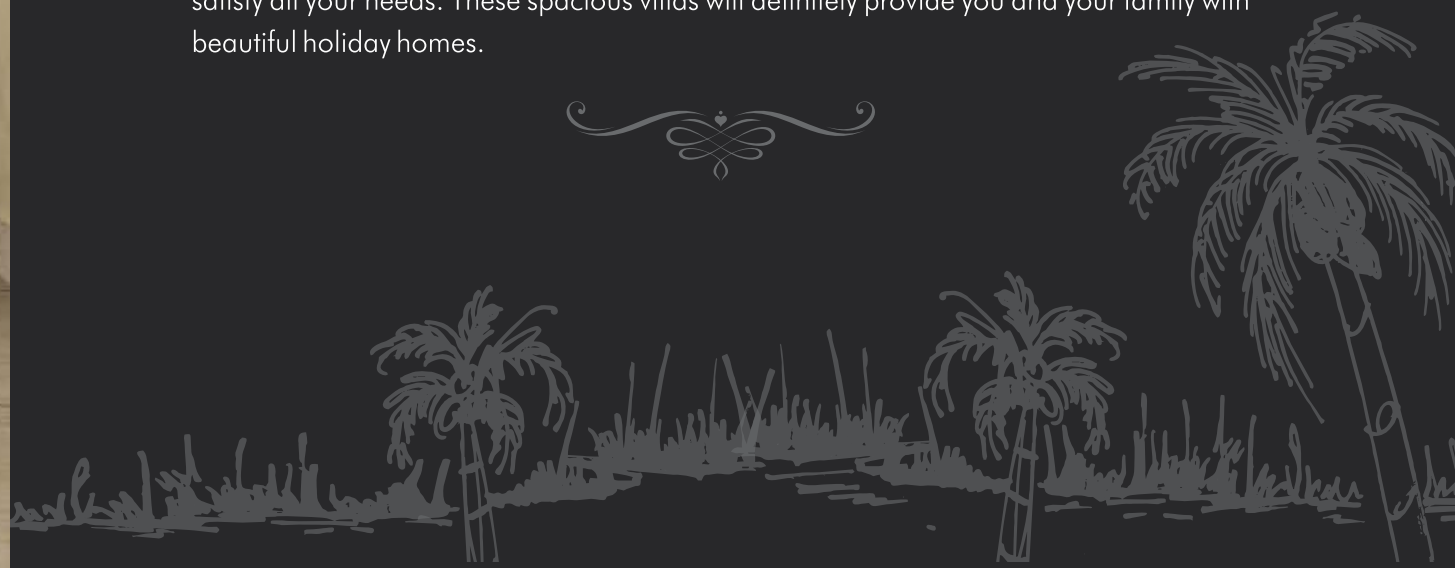
The Villas – A Pleasant Experience.

A vast covering of shrubbery and flowers, leading up to your doorstep, will give your home a royal yet pleasant appeal. The villas are an atrium contemporary take on traditional “Nalukettu” architecture, designed around an inner courtyard, with ventilated transparent sky roof. Engineered in clusters, incorporating the vastu element in design, all the villas are Vastu compliant.

Kerala Village provides three types of luxurious villas to their perspective buyers:

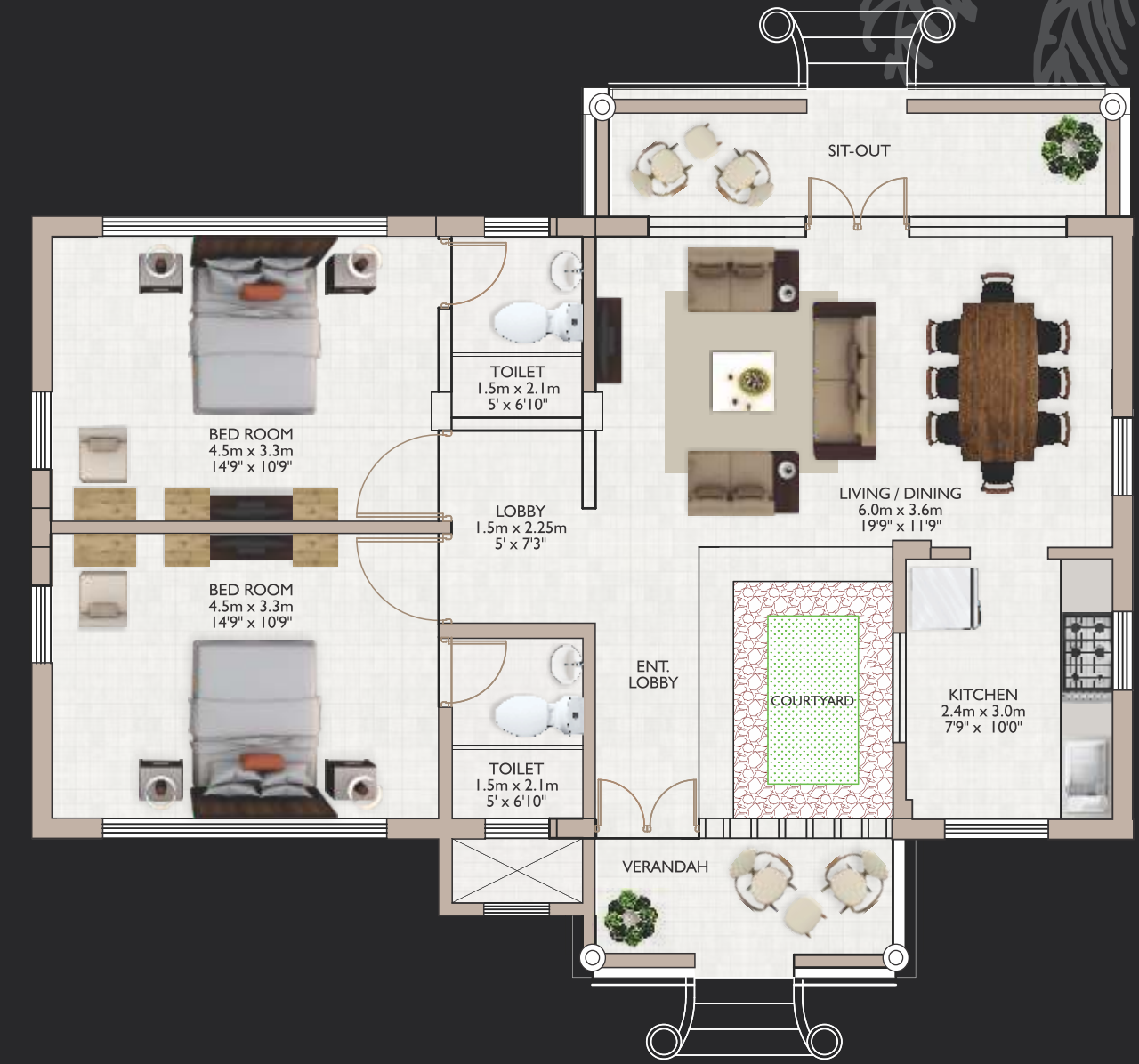
Type A - 2 BHK | Type B - 3 BHK | Type C - 4 BHK

The surrounding landscapes and amenities make every villa at Kerala Village, unique in its own way. The designs of the villas are not only a take on traditional architecture but also in compliance with modern provisions. The villas are equipped with the best in class finishes to satisfy all your needs. These spacious villas will definitely provide you and your family with beautiful holiday homes.





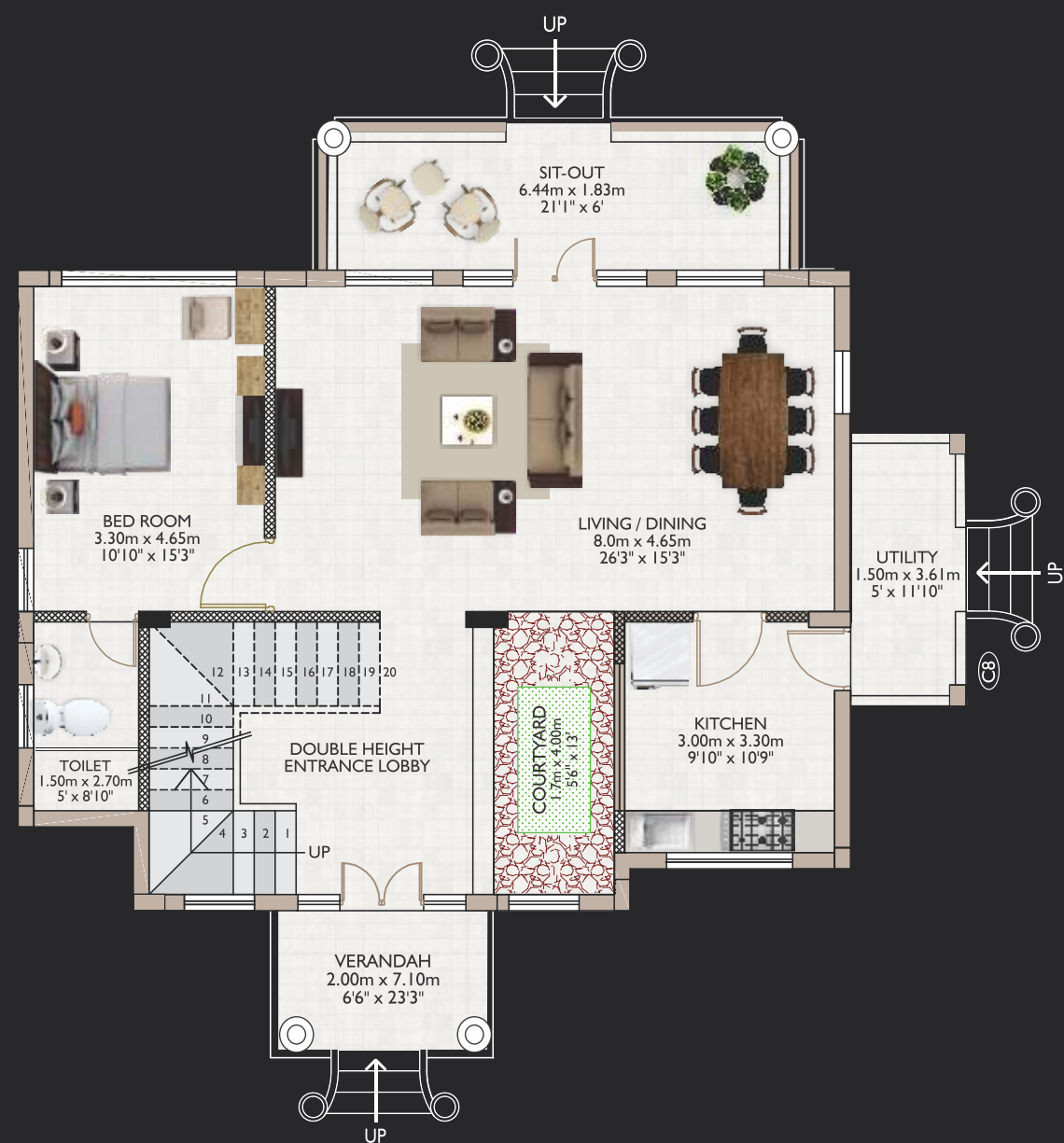
Villa Type A - 2 BHK



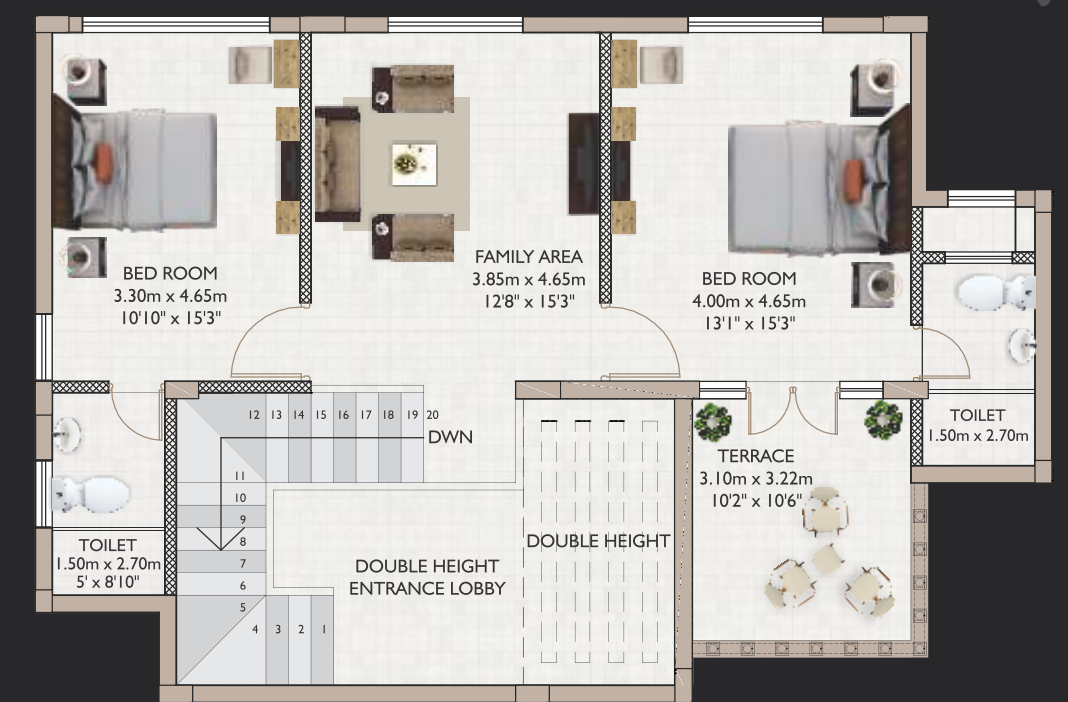
Ground Floor Plan



Villa Type B - 3 BHK



Ground Floor Plan

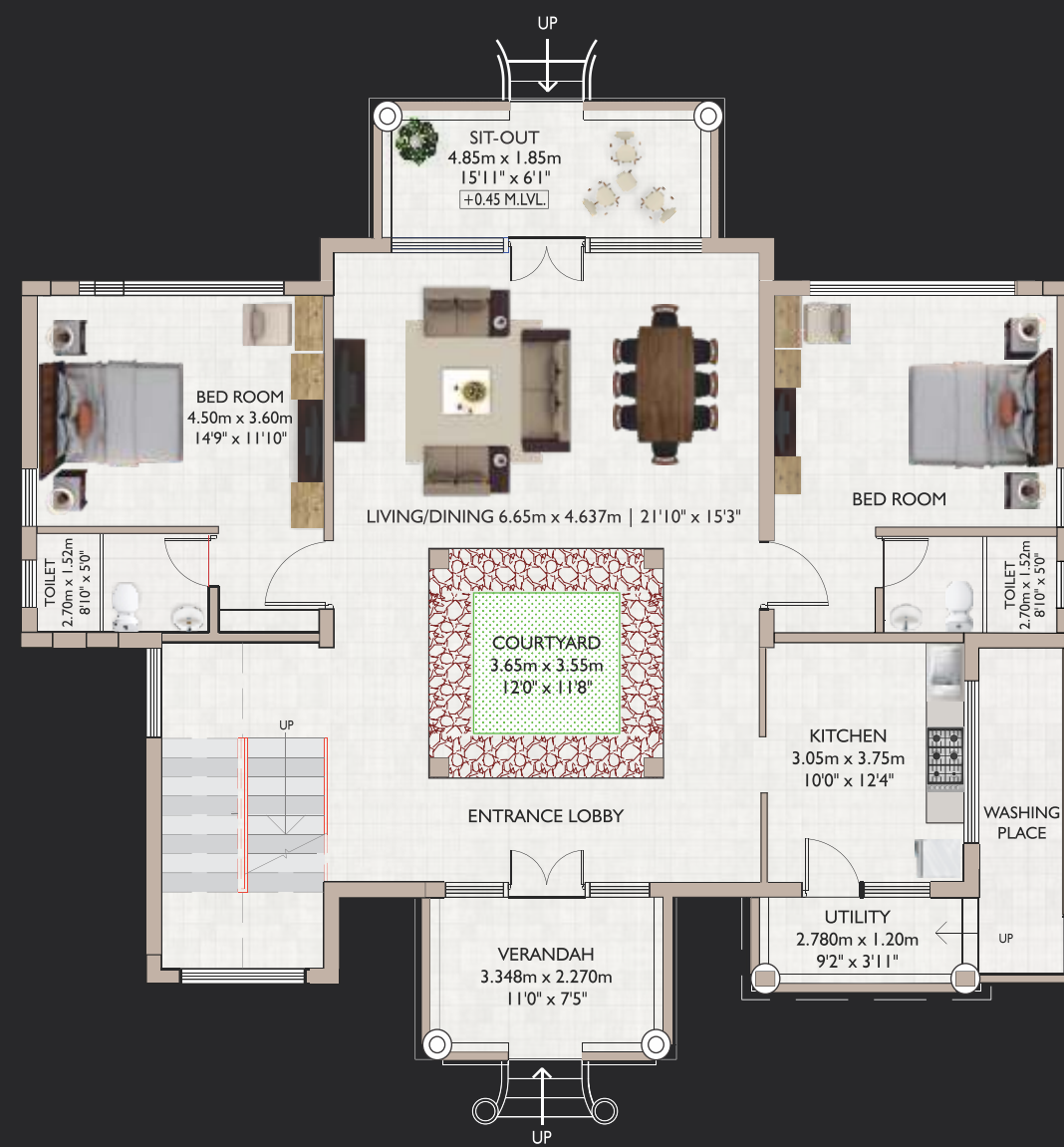


1st Floor Plan





Villa Type C - 4 BHK



Ground Floor Plan



1st Floor Plan



A Soulful Resort

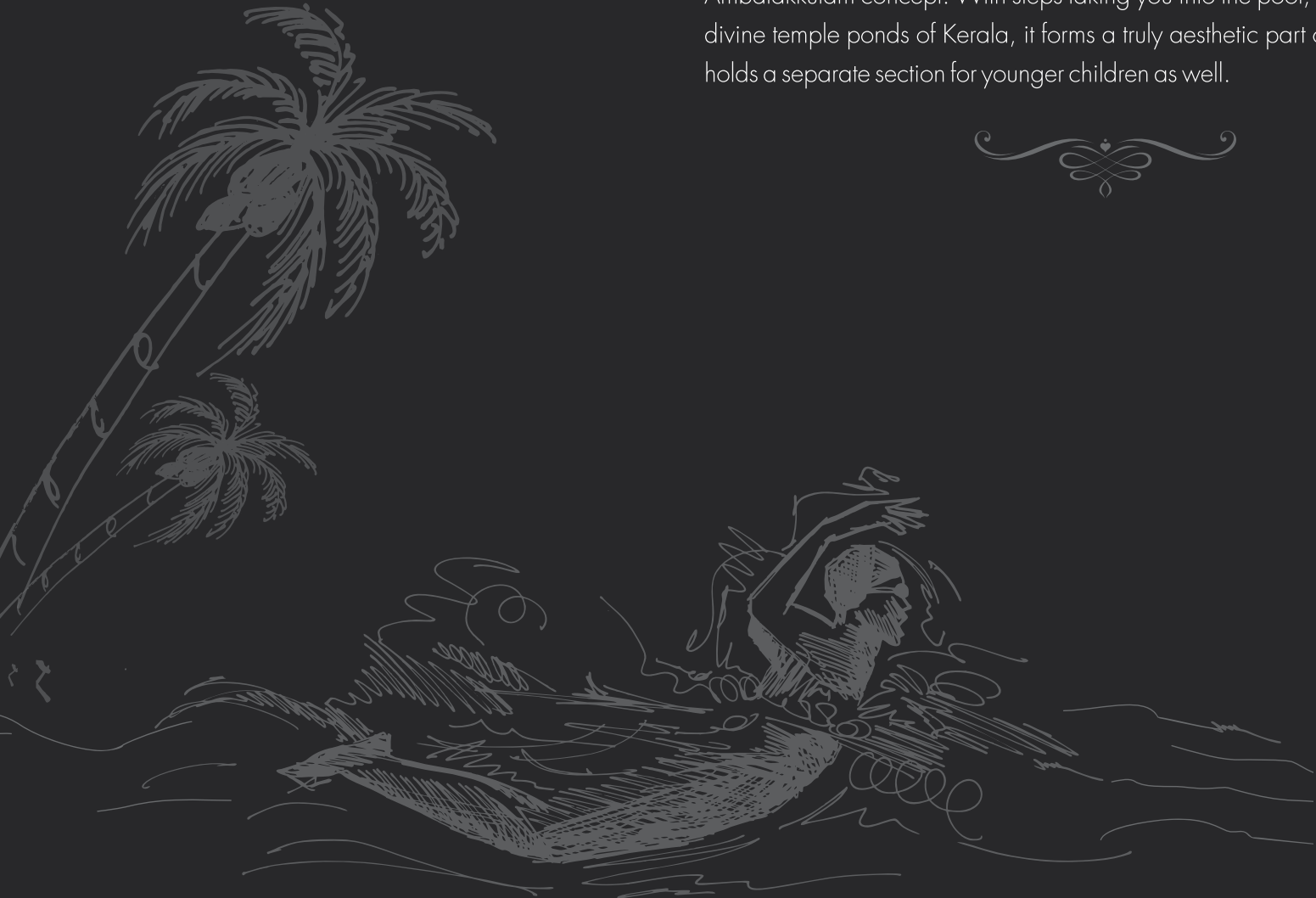
Kerala Village boasts a 5000 sq ft resort with guest rooms, recreation centre, badminton court, mini convention centre, multi cuisine restaurant, indoor games and a play area for children. The Recreation centre holds facilities like Yoga, Spa/Massage rooms, Sauna/Jacuzzi and Steam Baths. The guest rooms, situated at the 1st floor of the resort, are also provided to visiting guests on a basic tariff to facilitate their stay and make the amenities of the resort available to them.

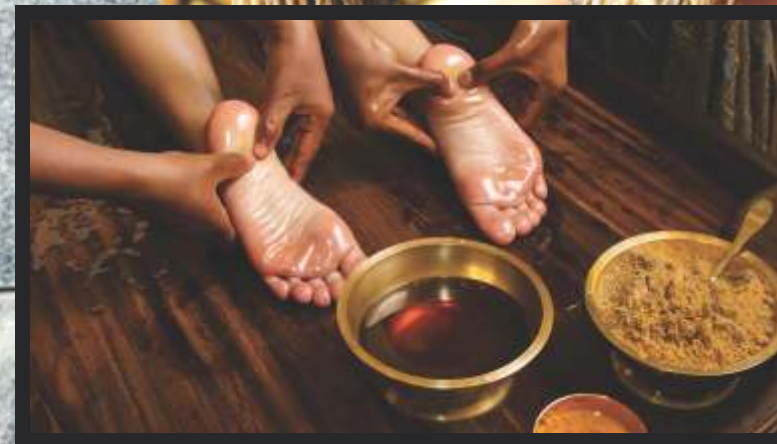




A Traditional Swimming Pool

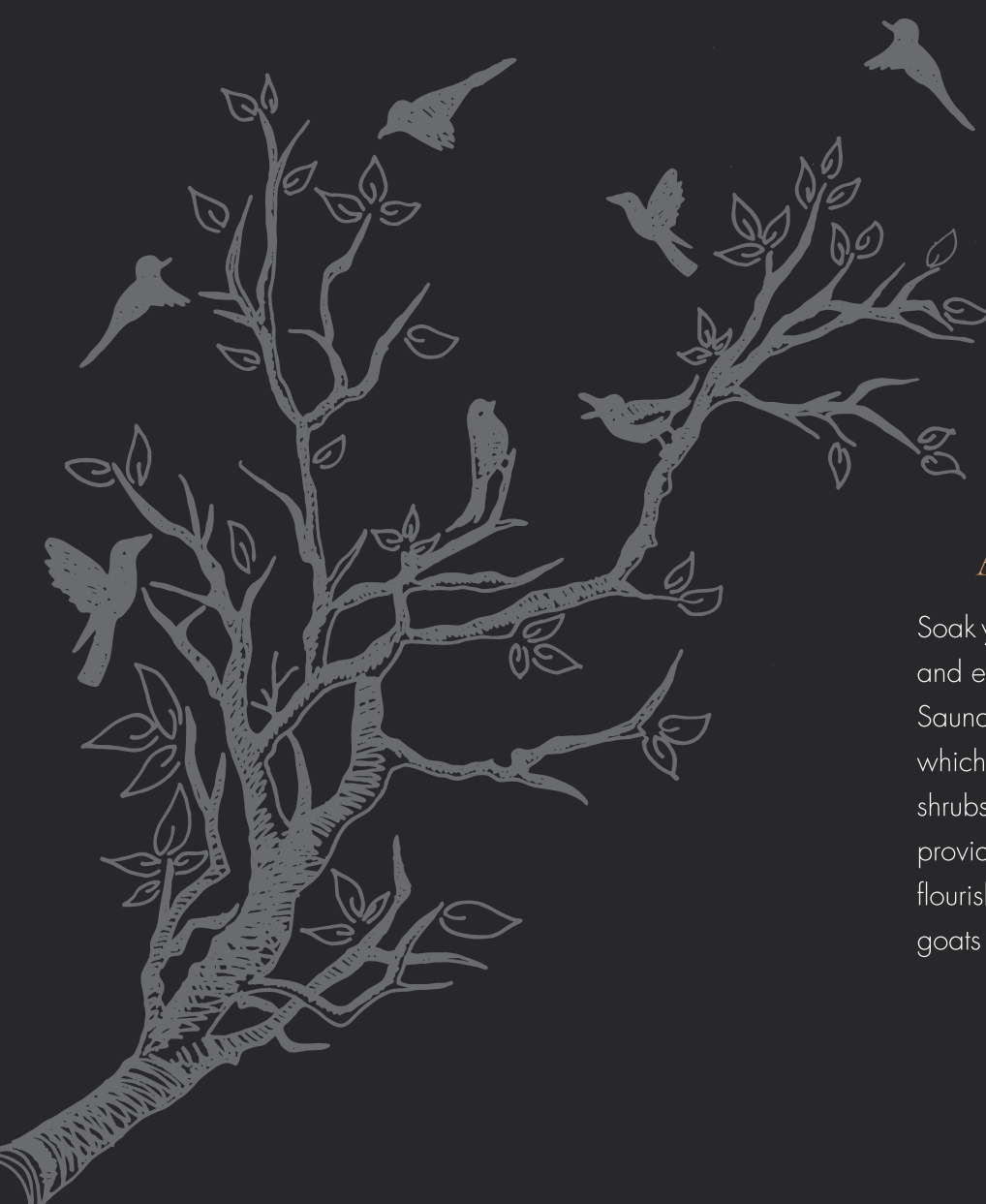
The swimming pool at Kerala Village has been traditionally designed on the Ambalakkulam concept. With steps taking you into the pool, to the feeling of the divine temple ponds of Kerala, it forms a truly aesthetic part of Kerala Village. It holds a separate section for younger children as well.





A Genuine Herbal Retreat

Soak yourself in peace with the special ayurvedic massages provided by experts and enjoy the rhythmic bubbles of a Jacuzzi after a skin relaxing session in the Sauna or Steam room. Kerala Village is also home to scenic herbal garden, which is home to many species of the plant kingdom. From fruits to flowers to shrubs to herbs, it has them all. The garden is immensely beautiful and yet provides a safe and serene habitat for many species of birds and insects to flourish. The farm area is comprised of flurries of dogs, cats, horses, sheep and goats as well as love birds, pigeons, hens and ducks.





Route Maps / Credits

Architects

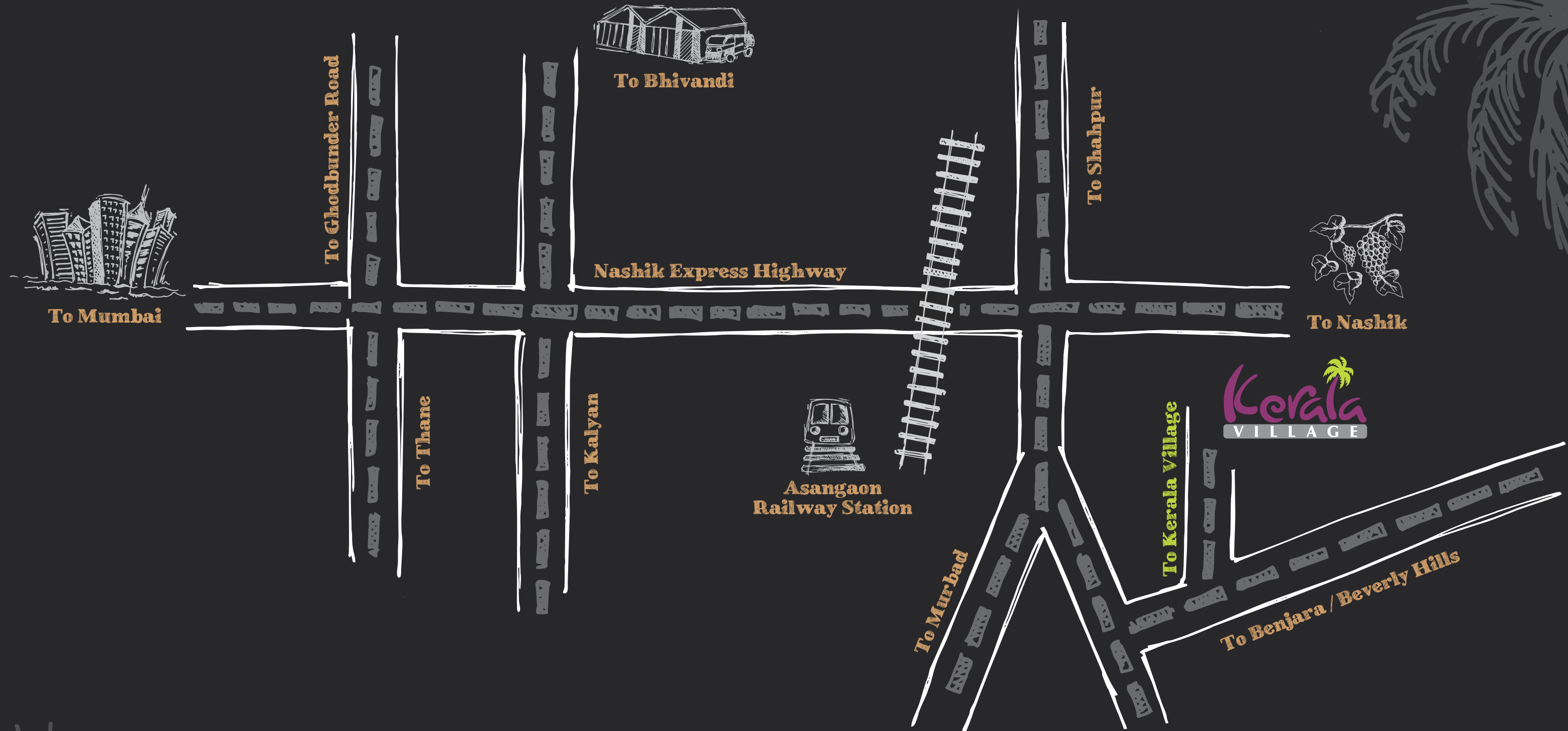
De-Con Consultants, Kalyan.
Suresh Babu and Partners, Mumbai.

Landscape Architect

Arunkumar Designers & Consultants Private Limited.

Bio Cosmic Energy Consultant

Shri. Rajashekhar Chawla, Mumbai





Site Add: Elixir Realty, Kerala Village, Khaire Road,
Near Shenva Naka, Satgaon, Shahpur

HO Add: Charms Group, Charms Star, 2nd Floor, Office No. E4,
Near Sanai Mangal Karyalay, Bailbazar, Kalyan (W) 421 301

E: keralavillage@charmsgroup.in | W: www.charmsgroup.in
T: +91 90042 22283

Disclaimer: The developer reserves the right to make changes at any time, if necessary without notice or obligation. All measurements and specification given elsewhere in this brochure are subject to minor variations without specific or general notice Elevation given is an artistic impression only. This brochure does not constitute neither a legal offer nor an invitation to an offer.